

Yearbook



Dear partners,

We are pleased to provide a brief overview of selected activities of our business group for 2022. Following the previous two years of restrictions caused by Covid-19, this was the first opportunity to operate for most of the period without limitations. This allowed to continue the development of the segment of international projects, including direct support by state administrations in the countries concerned.

The Czech Republic and Slovakia have not been left behind, of course. After the period of enforced slowdown, a significant number of new projects and other activities were launched.

We are pleased that our partners appreciate our outputs and that we often establish long-term stable cooperation beyond the scope of individual projects.



As we have done in the past, we primarily continue to provide the following services:

Integra Consulting

focuses mainly on environmental impact assessment, including assessment of the impact of concepts. In addition, it collects and evaluates environmental data relating to strategic planning and implementation of measures. The company is the base of the consortium with its offices in Prague, Bratislava, Tbilisi and Hong Kong.



DHP Conservation

covers the field of nature conservation and biodiversity. It is active not only in the Czech Republic but also significantly in candidate and partner countries of the European Union, where it participates in the transposition and implementation of the EU legislation. At the global level, it takes part in the processes of preparation and approval of global strategies and concepts in the sector of biodiversity conservation. It specifically focuses on providing biological assessments and impact assessments for Natura 2000 sites, not only in the Czech Republic. The company is based in Prague.



Aquagen



is a company that has significant expertise in water management as well as experience in the care of vegetation and other components relating to transport infrastructure. The company's office is in Liberec.

PlanTerra INSTITUTE OF LANDSCAPE ADAPTATION



applies an innovative approach to the landscape. It assesses its condition and plans its modification for future needs so that such changes are beneficial for both users and the environment. This is why PlanTerra also specializes in the assessment and development of blue-green infrastructure. The company has its office in Ostrava.

EIA Regional Centre



is the oldest Czech company focusing on EIA and SEA processes. It has been active in the field for 30 years. It is based in Klimkovice.

In particular, the expertise of our companies allows us to integrate our individual professional skills into innovative approaches. We are therefore active in the field of SMART, in applied research projects, and of course in the assessment of climate change impacts (climate proofing, GHG emissions), including the preparation for the implementation of emerging standards and legislation (e.g. The EU Nature Restoration Law).

We look forward to having you, the readers of the present yearbook, participate in any of the future stories.

On behalf of the management team:

Michael Hošek

A handwritten signature in black ink, appearing to read "Michael Hošek".

Jan Dušek

A handwritten signature in black ink, appearing to read "Jan Dušek".

Martin Smutný

A handwritten signature in black ink, appearing to read "Martin Smutný".

Jiří Dušek

A handwritten signature in black ink, appearing to read "Jiří Dušek".

Vladimír Rimmel

A handwritten signature in black ink, appearing to read "Vladimír Rimmel".

Course Trends in Nature Conservation

Educating
Professionals



Andrea Šandová
OFFICE MANAGER

We are well aware of the long lasting absence of a comprehensive and systematic education of professionals in nature conservation. This is why, together with the Faculty of Science of Charles University, we set up and organized the Trends in Nature Conservation programme. The course covered 3 semesters with a total of 8 days. Altogether 32 lectures on various topics were held and attended by up to 200 participants not only from the Czech Republic but also from Slovakia.

The programme was complemented with other activities offering deeper knowledge and discussions with experts from the Czech Republic as well as from other EU countries. 10 webinars were given by Czech experts and 8 online lectures by foreign experts. The participants thus had the opportunity to discuss online with foreign experts from the European Environment Agency, the International Union for Conservation of Nature (IUCN), the Federation of Nature and National Parks of Europe (EUROPARC), Rewilding Europe, the Swedish Environmental Protection Agency (SEPA) and others.



All lectures and presentations are available on the website:

<https://trendyochranyprirody.cuni.cz/>

Where you may also find other outputs of the project. It is anticipated that the programme will continue in a modified form.

Andrea Šandová

www.dhpconservation.com



Green Sustainable Housing

Amendment to the Koplastovce Municipal Master Plan



Rastislav Rybanič
SENIOR KONZULTANT

Changing the approach to the use of natural resources, including landscape space, is a necessary prerequisite for adaptation to climate change and other threats. There are not many functional and sustainable projects yet in the field of individual housing construction. We were therefore pleased when in 2022 we had the opportunity to work on an amendment to the master plan relating to an interesting project of sustainable scattered housing in Slovakia, namely in the municipality of Koplastovce, Hlohovec District.

The proposed development area covered by the amendment to the master plan forms a new mixed functional residential structure in an area with the main function of organic agricultural production and scattered sustainable housing, in the form of dispersed family houses and possibly other buildings with so-called permaculture farming. The area will be independent of standard forms of technical infrastructure. Only sustainable technologies, practices and materials will be used in its design, construction and management. The development area is adjacent to the existing built-up area of the Koplastovce municipality. It respectfully complements the original structure of the residential plots with minimum interference in the ecological stability of the area. The project anticipates construction of 225 family houses, 84 flats and other technical infrastructure and services.

Integra Consulting prepared the strategic assessment for the amendment of the municipal master plan and assessed the impacts of this project on the surrounding environment at a strategic level. Background studies were drawn up to assess the noise level, air pollution, impacts on public health and the landscape character. The notification of the strategic document was positively perceived by the respective authorities and the amendment to the master plan was subsequently approved.



Rastislav Rybanič

www.integracons.com



Climate Change Risk Assessment

Adapting Projects to Climate Change



Lucie Micková
SENIOR KONZULTANT

The D2 Rohožník Motorway Junction in Slovakia was one of the projects for which we carried out a climate change risk assessment. The project was assessed at the stage of the document preparation for the zoning decision. The Methodology Guide for the Assessment of Climate Change Impacts on Major Projects in Transport, issued by the Transport Research Institute in 2018, was used as a methodological basis. The vulnerability of the project was determined based on the collected data on climate change predictions, the current situation and the identified local extreme manifestations of climate (exposures). Subsequently, measures were proposed for the preparation of the next stage of the project documentation. The system of drainage will take into consideration extreme precipitations, the type of asphalt will reflect the potential increase in temperature, and the statistical calculations relating to structures sensitive to strong winds will take into account the possibility of wind occurrence (noise barriers, various types of power lines). The motorway will also be equipped with an information system warning of extreme weather events (Photo: Dust storm on the D2 motorway in 2023, source: tvnoviny.sk). This assessment is a standard part of the project preparation for motorways and expressways.

In other similar assessments for the preparation of studies, we use as methodological basis the Technical Guidance Note on Screening Infrastructure for Climate Impact in the Period 2021-2027 (2021/C 373/01) of the European Commission and the JASPERS guidance document named The Basics of Climate Change Adaptation Vulnerability and Risk Assessment, 2017.

Information for the Czech Republic
is obtained from websites:

www.klimatickazmena.cz

Lucie Micková

www.integracons.com



Inspection of mowing operations for the Technical Road Administration



Jan Dušek
PARTNER

What does vegetation do in the growing season? Correct. It grows. It grows virtually all the time. This inherent nature of vegetation needs to be suppressed along the roads in Prague. We obviously want as much greenery as possible in cities, and not just for aesthetic reasons. Vegetation also maintains better microclimate and hosts important species, including pollinators.

The Technical Road Administration in Prague has a passport of green areas where contractors carry out mowing. There are more than 35,000 areas, covering total 634 hectares. Integra Consulting has been inspecting the mowing operations and removal of litter from the green areas since 2022. And it's certainly not a job for its own sake. In the past year alone, we have identified 1,811 defects that contractors have had to rectify. In addition to the above mentioned, we help the Technical Road Administration to set up the implementation of blue-green infrastructure elements so that life in the capital is sustainable for decades to come.



Jan Dušek

www.integracons.cz

 **integra**
CONSULTING

Permeability of migration corridors



Vlastimil Bogdan
SENIOR KONZULTANT

The Institute of Landscape Adaptation, PlanTerra, has been contracted by the Road and Motorway Directorate of the Czech Republic to propose measures to reduce the risk of collisions of vehicles with animals while maintaining the permeability of the migration corridor for the wildlife. The task covered the section of the 1st class road I/13 from km 113.5 to km 116.5, where 53 accidents were caused by collisions between vehicles and wild animals in the past 5 years. In this section, the road also crosses the habitat of selected specially protected species of large mammals.

Our proposal for an innovative solution is to use radar detection of wildlife in combination with traffic light warning signs. The system will alert drivers of the presence of animals on the road or in its vicinity. The radar will monitor the area within 300 metres of the road. It is equipped with sophisticated software that can identify the size of the animal, and the direction and speed of its movement (behaviour). Analysing the situation, it sends a signal to the traffic lights with the signal "beware of animals". The data from the radar can also be shared in the C-ITS (Cooperative Intelligent Traffic Systems) system.

Effective measures to increase traffic safety by protecting vehicles from collisions with wildlife are not available for lower class roads. We consider the presented system as a solution especially for places where specially protected species of large mammals occur.

Vlastimil Bogdan

www.planterra-institute.cz



PlanTerra

Assessment of the impact of the Operational Programme

Just Transition 2021-2027
on Natura 2000 sites



Alice Háková
SENIOR KONZULTANT

Within the activities of the PlanTerra – Institute of Landscape Adaptations based in Ostrava, my responsibility is to assess the impacts of projects (constructions and concepts) on living nature. I am an authorized person of the Ministry of the Environment (MoE) for conducting "biological" assessment under Sec. 67 of Act No. 114/1992 Coll. and for assessing the impacts on Natura 2000 sites under Sec. 45j of the same Act.

In 2022, I was a member of the team assessing the impact of the Operational Programme Just Transition 2021-2027 on the Natura 2000 sites pursuant to Sec. 45j of Act 114/1992 Coll. in the Moravian-Silesian, Karlovy Vary and Ústí nad Labem regions, which was commissioned by the Ministry of the Environment of the Czech Republic. The aim of the support is to help regions and people tackle the social, economic and environmental impacts of the transition, which focuses on achieving the energy and climate goals of the European Union for 2030 and a climate neutral EU economy by 2050.

The concept was assessed at two levels. The assessment covered the potential impacts of the generally proposed measures, which are specified for the territories of the individual regions, and the potential impacts of the proposed strategic projects.

The initial screening of the proposed activities and projects identified that there was insufficient information to conclude that there would be no significant negative impact on Natura 2000 sites. For this reason, a consultation with the contracting authority was held. Within the subsequent comment procedure at the MoE, the assessed concept was complemented with the provision stipulating that the programme would not support any projects with significant negative impacts on the environment or on the Natura 2000 sites and their subjects of conservation. Some of the projects have been modified in their scope.

A handwritten signature in black ink that reads "Alice Háková".

www.planterra-institute.cz



Assessment of the impact of the Operational Programme

Just Transition 2021-2027
on Natura 2000 sites



Alice Háková
SENIOR KONZULTANT

Based on the amendments to the concept, it was possible to exclude significant impacts on the subjects of conservation of Natura 2000 sites. The concept was subsequently approved, which ensured the availability of subsidies in compliance with the calls issued by the Ministry of the Environment.

In my work, I seek solutions allowing the implementation of projects and concepts in conformity with legal provisions and binding methodological guidelines.

Preserved stands of the natural habitat 9110 Luzulo-Fagetum beech forests in the Východní Krušné hory SCI, adjacent to the Czechoslovak Army Mine premises in the north. A pumped storage reservoir was designed in this area, which would irreversibly cause a significant impact on the local forest stands. Therefore, its implementation cannot be supported by the programme.



Alice Háková

www.planterra-institute.cz



PlanTerra

Protected landscapes in Georgia

Designation and Management Guidelines



Ondřej Bušek
SENIOR KONZULTANT

In 2022, we implemented a project for the United Nations Development Programme (UNDP) under the "Czech-UNDP Partnership – Expertise on Demand" programme to promote the development of the system of protected landscapes in Georgia. The aim of the project was to produce a set of manuals covering all aspects of protected landscape management, while contributing to building expert capacities by organizing expert roundtables and workshops. The beneficiary of all project outputs was the Ministry of Environmental Protection and Agriculture of Georgia.

In February 2022, we discussed our proposals and recommendations with the local independent experts and staff members of the current protected landscape administrations within the framework of workshops and expert roundtables organized directly in Tbilisi. In June 2022, we held another round of workshops and expert roundtables in Tbilisi to present the final outputs to the stakeholders. These are detailed manuals covering the preparation of management plans, zoning design, management, selection criteria or financing of protected landscapes.

Our team has been active in Georgia since 2012 and has been engaged in the preparation of several management plans for protected landscapes and zoning designs. However, there has gradually emerged a need to develop a generally applicable legislative and professional framework for the management of protected landscapes. Through this activity we also aimed to support establishment of new protected landscapes in Georgia, for which there is a considerable and still unused potential – only 3 have been declared so far. As a result, the Czech Republic is becoming a leader in Georgia in the management of areas combining natural and cultural heritage.

Ondřej Bušek

www.dhpconservation.com



Chateau Wine Cellar Klimkovice

15 years of
existence



Vladimír Rimmel

PARTNER

In 2007, following 15 years of activities in the field of environmental impact assessment (EIA), we began to build a wine cellar. We agreed with the town of Klimkovice on the lease of the underground premises from the 15th and 16th centuries.

In the summer of 2008, we opened the first part of the Chateau Wine Cellar in Klimkovice. Thus, this year we can celebrate 15 years of patient efforts to promote the culture of wine drinking in the region of beer and schnapps. Among other services, the cellar offers guided wine tastings of leading Moravian winemakers and wine importers, or opportunities for business and social meetings in sensitively reconstructed medieval interiors. In the perfect conditions of the archives, about 7,000 bottles are aging and waiting for their opportunity.

The tasting with Jindra Kadrnka, the fresh winner of the Winery of the Year 2022, accompanied by his "fan club" has been one of the highlights of the year.

Vladimír Rimmel

www.rceia.com



BREEAM

Report of the Ecologist



Michal Kešner
SENIOR KONZULTANT

In 2022, we managed to firmly incorporate in the company portfolio the so-called Suitably Qualified Ecologist (SQE) report within the assessment for BREEAM certification. The BREEAM (Building Research Establishment Environmental Assessment Method) certification represents a standard of best practice in building design with an emphasis on sustainability in construction. It is the longest established and currently the most common certification in the field of energy efficient and sustainable buildings. Preparation for certification also consists of assessment of the value and potential of existing ecological features in the construction area, their protection, the use of their potential and the possible design of new features.

The last year project for the construction of new storage facilities in Ústí nad Labem is an example of such activities. Three large halls will occupy most of the brownfield site. Nevertheless, several new ecological features were successfully proposed and discussed with the investor. These will improve the environment both in terms of biodiversity and the future users. The design included herb lawns, planting of native tree and shrub species, and an open rainwater retention reservoir with gentle banks. A so-called "logger" (beetle habitat) was made from trunks of trees felled within the preparation of the site.

Michal Kešner

www.integracons.com



Analysis of the potential of waste production and material flows

in the project area for the purposes of application for support from the Operational Programme Environment (OPE)

Petra Šutarová
SENIOR KONZULTANT

In 2022, we conducted an analysis of the potential of waste production and material flows in the municipality of Jistebník. The municipality decided to increase the recovery of biodegradable waste and to implement a system of individual composting. In this regard, the municipalities intended to provide the best conditions for the citizens to achieve the maximum effect in terms of reducing the total amount of mixed municipal waste. The purchase of composters and chippers for the citizens of Jistebník was one of the steps towards this goal.

To finance the purchase, the municipality applied for support from the Operational Programme Environment 2021-2027. The analysis of the potential of waste production and material flows was carried out as an annex to the application for support from this subsidy programme. An estimate was made as to the future annual waste production in the respective area in the year of project implementation (2023) and for the sustainability period of the project (year of implementation plus five years), i.e. 2028. This estimate was based on the data from the records on the production and management of waste for the period 2017-2021, the trends in the Waste Management Plan of the Czech Republic and the Waste Management Plan of the Moravian-Silesian Region.

Petra Šutarová

www.integracons.com

 **integra**
CONSULTING

Analysis of the potential of waste production and material flows

in the project area for the purposes of application for support from the Operational Programme Environment (OPE)

The production of biodegradable waste in the municipality shows an increasing trend. The Waste Management Plan of the Moravian-Silesian Region anticipates that biodegradable waste will constitute the fastest growing share of municipal waste. Such production may further increase as a result of the growing number of family houses and relatedly the number of lawns maintained. As a result of the provision of home composters, the production of residual mixed municipal waste will be reduced by the current potential of biodegradable waste separated from the mixed municipal waste from 2023 onwards. The project is fully in line with the objectives of the Waste Management Plan of the Czech Republic and the Waste Management Plan of the Moravian-Silesian Region, with the current legislation and the current trends in waste management. It will significantly contribute to an increase in the separation of biodegradable waste generated by the municipality households and to its recovery. The output of the project is thus reduced production of mixed municipal waste through an increase in the separation of the biological component from household municipal waste.



Petra Šutarová
SENIOR KONZULTANT

Petra Šutarová

www.integracons.com

 **integra**
CONSULTING

Biological supervision of the Harcov Water Reservoir construction



Martin Dušek
PARTNER

In summer 2022, we were contracted to provide biological supervision during the construction project "Harcov Water Reservoir, Ensuring Safety in Flood Events". The reconstruction of the dam in the heart of the city of Liberec will take place over 3 construction seasons until 2025. However, a substantial part of our work has already been performed at the time of draining the reservoir. The main task of the biological supervision was to ensure the collection and transfer of specimens of the specially protected swan mussel (*Anodonta cygnea*), in line with the issued Decision on the Exemption from the Protection Conditions of the Specially Protected Animal Species according to Sec. 56 of Act No. 114/92 Coll. on Nature and Landscape Protection.

The site monitoring started on 16 September 2022, simultaneously with the start of the reservoir discharge. In the following days, we monitored the gradually emerging areas of the exposed bottom of the reservoir. Interestingly, the mussels were found in greatest numbers at relatively great depths of approximately 6 metres, while habitats that had been previously identified as optimal (deposits near the inflow at depths of approximately 1.5 to 2 metres) were only sporadically populated. This despite the fact that the water in the reservoir was still relatively warm at the time.



Martin Dušek

www.aqua-gen.cz

AQUAGEN

Biological supervision of the Harcov Water Reservoir construction



Martin Dušek
PARTNER

The rescue collection of the mussels was carried out manually from the shore in places that could be reached on foot thanks to the layer of sediment, and also from the boat in places unreachable this way. In extensive areas with minimum water depth, we made use of a paddleboard. The mussels were collected daily over a period of 29 days.

A total of 2,793 swan mussels were collected and transported to 3 alternate sites identified as ideal for the purpose. The first site was the pond in the urban part Kateřinky. The second was a flooded sandpit in Oldřichov v Hájích. The third site was the Fojtka Water Reservoir.



Martin Dušek

www.aqua-gen.cz

AQUAGEN

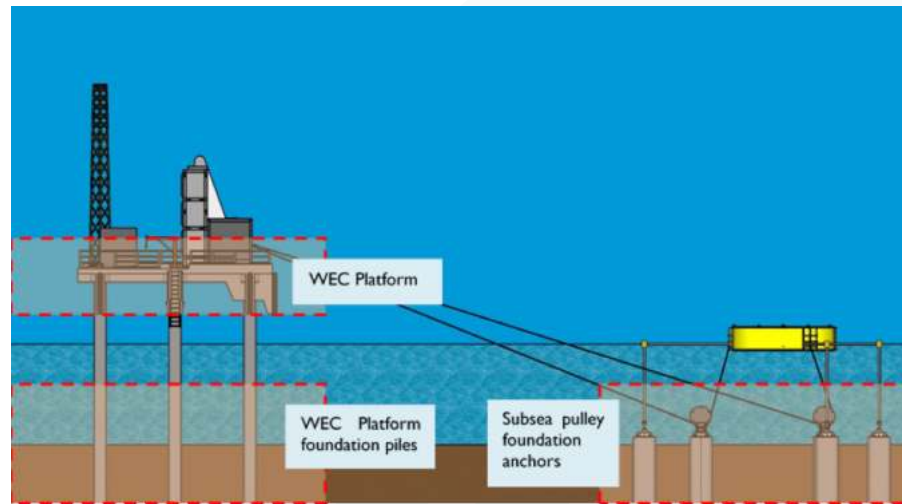
EIA for nearshore wave power plant

An Binh Island,
Vietnam



Martin Smutný
PARTNER

Between October 2021 and November 2022, Integra Consulting was a partner in the implementation of the project "Vietnam Renewable Energy Transaction Assistance Fund Nearshore Wave Power Plant in Ly Son: EIA, Gap Analysis, and Learning Capture", funded by USAID and aimed at promoting technological innovation in the energy sector. The major component of the project was the EIA for the mentioned power plant, located close to An Binh Island on the eastern coast of Vietnam in the South China Sea. An Binh Island and its surrounding islands are part of the Ly Son Marine Protected Area. Pursuant to the work assignment, the EIA was carried out in accordance with the requirements of the national EIA legislation in Vietnam as well as the principles of international good practice for EIA, i.e., the World Bank's Environmental and Social Framework in particular. Our experts were involved in the project as the team leader and expert on climate change.



Scheme of the wave power plant

Martin Smutný

www.integracons.com

EIA pro příbojovou elektrárnu

ostrov An Binh,
Vietnam



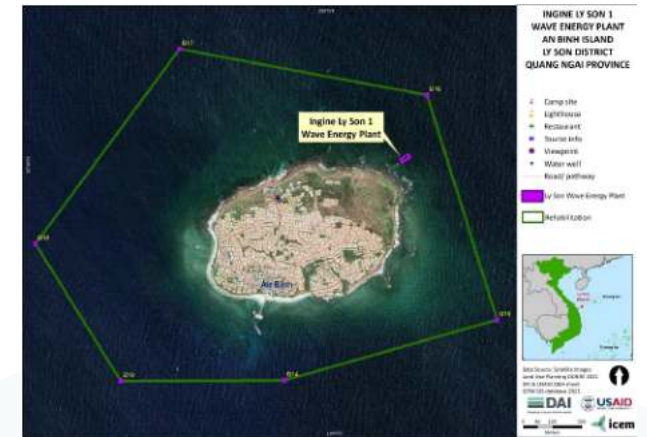
Martin Smutný

PARTNER

The main topics addressed within the EIA framework included the social and economic impacts on local populations and marine biodiversity. On the basis of the analyses carried out (including the socio-economic survey and the field surveys focusing on coral reefs), it could be concluded that the implementation of the wave power plant will bring significant improvements in the living conditions of the local community. This will directly enhance the stability of the electricity supply as well as the drinking water supply, since the electricity will be available for the operation of the desalination plant. In contrast, the operation of the power plant may negatively affect the existing tourism on the coast of the island and thus reduce the income of the local population – alternative tourist routes will need to be planned. At the same time, the local coral reefs and fish communities may be negatively affected during the construction of the plant due to increased turbidity.

Martin Smutný

www.integracons.com



Project location

Consultations with the respective public authorities and the general public were part of the EIA. The outputs and conclusions of the discussions were taken into consideration in the final version of the EIA documentation. The key factors for a successful EIA process were intensive communication with the bodies in charge of environmental protection, including the Marine Protected Area Authority, detailed analyses and consultations at the stage of assessment scoping and subsequent detailed analyses and field surveys.

Environmental, Gender and Social Impact Analysis (EGSIA), Risk Management and Sustainability Plan (RMSP) for the programme Sustainable Development of the Area of Aragvi Protected Landscape and the Local Communities in Georgia.



Michal Musil
SENIOR KONZULTANT

Between spring and autumn 2022, the team of the Integra Consulting and Naviga Advisory and Evaluation consortium, consisting of Czech and Georgian experts, carried out a series of activities in support of the implementation of the Programme for the Sustainable Development of the Aragvi Protected Landscape in Georgia. Apart from drawing up a study to assess the impacts of the Programme on the environment, gender equity and the social and economic situation of the communities in this rather sparsely populated and unique landscape, not yet much affected by tourism, our task was primarily to propose amendments to the focus of the Programme and to its monitoring.

In addition to standard analyses of available data, our work also comprised a considerable number of field surveys in the given area. In terms of the environment, we mainly focused on documenting the main identified issues (e.g., slope erosion, livestock trampling and overgrowth of mountain meadows by forest, flood protection, waste management, etc.). The part of the field survey related to gender and socio-economic issues was based on a combination of focus groups and a questionnaire. However, the implementation of such surveys is quite challenging in the environment of remote mountain communities. Without Integra's previous extensive experience in this area and especially without the participation of Georgian experts in our team, it would hardly have been possible.

Our observations and proposals were presented at the Embassy of the Czech Republic in Tbilisi with the participation of representatives of the Czech Development Agency, i.e. the main donor of the Aragvi Protected Landscape Development Programme and the contracting authority of the mentioned project. Based on our outputs, the logical framework of the Programme and monitoring indicators are now being adjusted to better reflect the evolving situation and the needs of the communities in the Aragvi Protected Landscape.

Michal Musil

www.integracons.cz



Assessment of the amendment to the Kobylá nad Vidnavkou Master Plan and environmental impact assessment of the project

Construction of Wind Power Plants Kobylá nad Vidnavkou

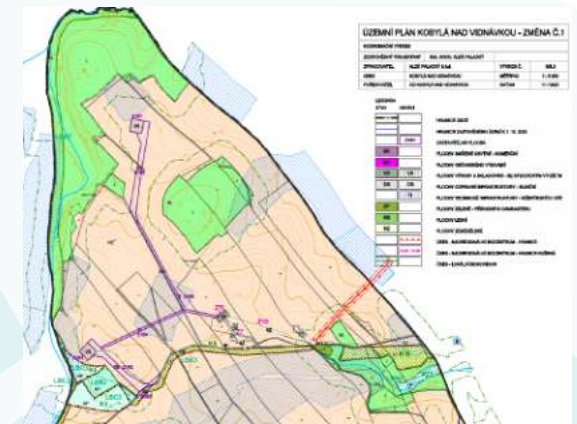


Jitka Kaslová
SENIOR KONZULTANT

In 2021, the company VE Kobylá nad Vidnavkou, s.r.o. approached our team to consult the planned construction of two wind power plants (WPP) in the cadastre of the municipality of Kobylá nad Vidnavkou from the environmental point of view.

We recommended the investor to first ensure the compliance of this project with the spatial planning documentation. As the project fulfilled the framework for the assessment under Act No. 100/2001 Coll., it was necessary to carry out the strategic environmental assessment (SEA) of the amendment to the master plan.. Subsequently, we produced environmental impact assessment (EIA) for the investor.

Through well-managed communication with the investor and the respective authority, and thanks to a sufficient amount of technical data on the project under preparation, we were able to carry out a more detailed assessment at the SEA stage than is usual. Within the noise level assessment, we carried out a noise pollution study. We also conducted the landscape impact assessment, the biological assessment and the public health impact assessment.



Jitka Kaslová

www.integracons.com

 **integra**
CONSULTING

Assessment of the amendment to the Kobylá nad Vidnavkou Master Plan and environmental impact assessment of the project

Construction of Wind Power Plants Kobylá nad Vidnavkou



Jitka Kaslová
SENIOR KONZULTANT

The more detailed SEA provided us with an excellent basis for assessing the impacts at the project level. In the EIA notification, we used and refined all the data obtained in the previous step. The impacts of the project on Natura 2000 sites were newly assessed, with regard to the potential impact of the construction of the wind power plants on bats.

In April 2023, screening under Act No. 100/2001 Coll. was carried out by the Regional Authority of the Olomouc Region. As no substantial objections to the project were submitted during either the SEA phase or the EIA process and no public opposition was observed, the Regional Authority decided to terminate the EIA process at the stage of screening. Despite this being a legal option, such situations are very rare, mainly due to the significant impacts of wind power plants on any of the components of the environment.

This example demonstrates how, by means of appropriate procedures and intensive communication with the investor and the respective authority, it is possible to minimize the delays, additional costs and other issues that often appear during the environmental impact assessment of wind power plants.

A handwritten signature in black ink, appearing to read 'Jitka Kaslová'.

www.integracons.com

The logo for Integra Consulting, featuring a stylized circular icon composed of three curved lines on the left, followed by the word 'integra' in a bold, lowercase sans-serif font, and 'CONSULTING' in a smaller, uppercase sans-serif font below it.

integra
CONSULTING

Negotiations and expert support for the Czech Presidency of the Council of the EU



Michael Hošek
PARTNER

The Czech Republic held the Presidency of the Council of Europe in the second half of 2022. Following the period of restrictions associated with the Covid-19 pandemic, a significant number of conferences on biodiversity conservation conventions took place. The Czech Republic coordinated all 27 EU Member States. This included the Convention on Biological Diversity (CBD), under which the so-called Kunming-Montreal Global Biodiversity Framework, i.e. a global strategy for biodiversity conservation by 2030, was prepared for approval.

Given our long-term experience in nature conservation at the international level and our cooperation with the Ministry of the Environment, we were invited to join the Presidency team as experts, negotiators and lead authors (i.e. guarantors for selected documents). We coordinated activities with the representatives of the European Commission and Member States, and participated in expert meetings (Geneva, Switzerland; Montreal, Canada; Nairobi, Kenya; and Brussels, Belgium) between March and November. The most significant, however, was the CBD conference itself in Montreal in December, attended by all 196 Parties.

In the negotiations, we drew on our experience at a strategic as well as a practical level. Our profound knowledge of the approved Global Framework and the genesis of its creation allows us to participate in its interpretation in the European context and its implementation in the conditions of the Czech Republic.

Michael Hošek

www.dhpconservation.com



Revitalization of the Swimming Pool Outflow in Zdiby near Prague



Přemysl Bureš
PROJEKTANT

In 2022, in cooperation with the municipality of Zdiby, we successfully implemented the project of revitalization of the outflow from the local recreational swimming pool. The aim was to use the area, which the municipality had acquired in its ownership, for water retention, enhancement of the natural water runoff from the area and improvement of the aesthetic value of the public space of the municipality. The thalweg of the Přemýšlenský Brook had long been unused and gave way to succession of wetland vegetation with no regular intervention.

Jointly with the municipality of Zdiby, we managed to transform the originally piped outflow in a length of nearly 100 metres and create a gently meandering natural stream bed. This will provide conditions for the smooth stable outflow from the swimming pool, as well as for excess flows in the event of heavy rainfall. The stream bed thus also serves as a temporary retention area holding back the surface water runoff further downstream. This enhances infiltration of water directly in the area and helps to moderate the flow of the Přemýšlenský Brook in the lower parts of the municipality.



Přemysl Bureš

www.aqua-gen.cz

AQUAGEN