

# Yearbook





# VISIONS AND MISSION



## Our vision

Long-term development of the company in accordance with the principles of sustainability, including environmental protection through our professional services.

## Mission of INTEGRA Group

We promote sustainable development and improve the environment by applying our own knowledge and experience, applying innovative solutions, and creating partnerships to foster a world where human progress and the environment coexist harmoniously.





# INTRODUCTORY WORD

Dear partners,

we present you a brief overview of our business group's activities for the year 2023.

As in previous years, we have cooperated with you in the implementation of orders not only in the Czech Republic and Slovakia, but also in other countries in Europe and Asia. These were projects with established standard procedures, as well as the application of innovative solutions and the development of new areas. We find discovering new opportunities in environmental assessment and protection not only necessary, but also fun and fulfilling. This is the only way we are able to provide you with quality services that meet your needs and the development of the company. And we trust that this approach suits you.

We are pleased that a significant part of our projects is part of a long-term cooperation that has the potential for professional development. We look forward to continuing to do so.

For the management of the business group

Michael Hošek

Jan Dušek

Martin Smutný

Jiří Dušík

Vladimír Rimmel

# INTRODUCTION OF THE CONSORTIUM



## Integra Consulting

covers nature conservation and biodiversity. It is active not only in the Czech Republic, but also significantly in candidate and partner countries of the European Union, where it supports the transposition and implementation of EU legislation. At the global level, it participates in the preparation and approval of global strategies and conceptual materials in biodiversity conservation. In addition to research activities, it focuses on providing biological assessments and impact assessments for Natura 2000 sites, not only in the Czech Republic. He is based in Prague.



## DHP Conservation

covers nature conservation and biodiversity. It is active not only in the Czech Republic, but also significantly in candidate and partner countries of the European Union, where it supports the transposition and implementation of EU legislation. At the global level, it participates in the preparation and approval of global strategies and conceptual materials in biodiversity conservation. In addition to research activities, it focuses on providing biological assessments and impact assessments for Natura 2000 sites, not only in the Czech Republic. He is based in Prague.



## Aquagen

It offers experience in water management as well as vegetation management and other components related to transport infrastructure. He can design the revitalization of small watercourses and plan measures to improve the water regime in the landscape. You can visit the company's office in Liberec.



## PlanTerra – Institute of Landscape Adaptation

looks at landscapes in an innovative way. It assesses their condition and plans their modification for future needs so that such changes are good for users and the environment. That is why one of its specialities is the assessment and development of blue-green infrastructure. It has an office in Nebilovy in the Pilsen region..



## EIA Regional Centre

with more than 30 years of activity is the oldest Czech company focused on EIA and SEA processes. It is based in Klimkovice, where you can also visit its **wine cellar.**

The expertise of our companies allows us to integrate individual expertise into innovative approaches. Therefore, we are active in the area of SMART Cities, in applied research projects, and of course in climate change impact assessment (climate proofing, GHG emissions), including preparation for the implementation of new standards and legislation (e.g. EU Regulation on nature restoration).



# WORD OF PARTNERS



## **Radka Vladyková**

*Director of the Union of Towns and Municipalities of the Czech Republic*

I have known and actively cooperated with the INTEGRA Group team for a long time, specifically in the area of SMART Cities and EU Taxonomy. I appreciate their international overview, which they are able to interpret to our Czech conditions and at the same time bring practical application to local governments. This helps to put into practice appropriate innovations..

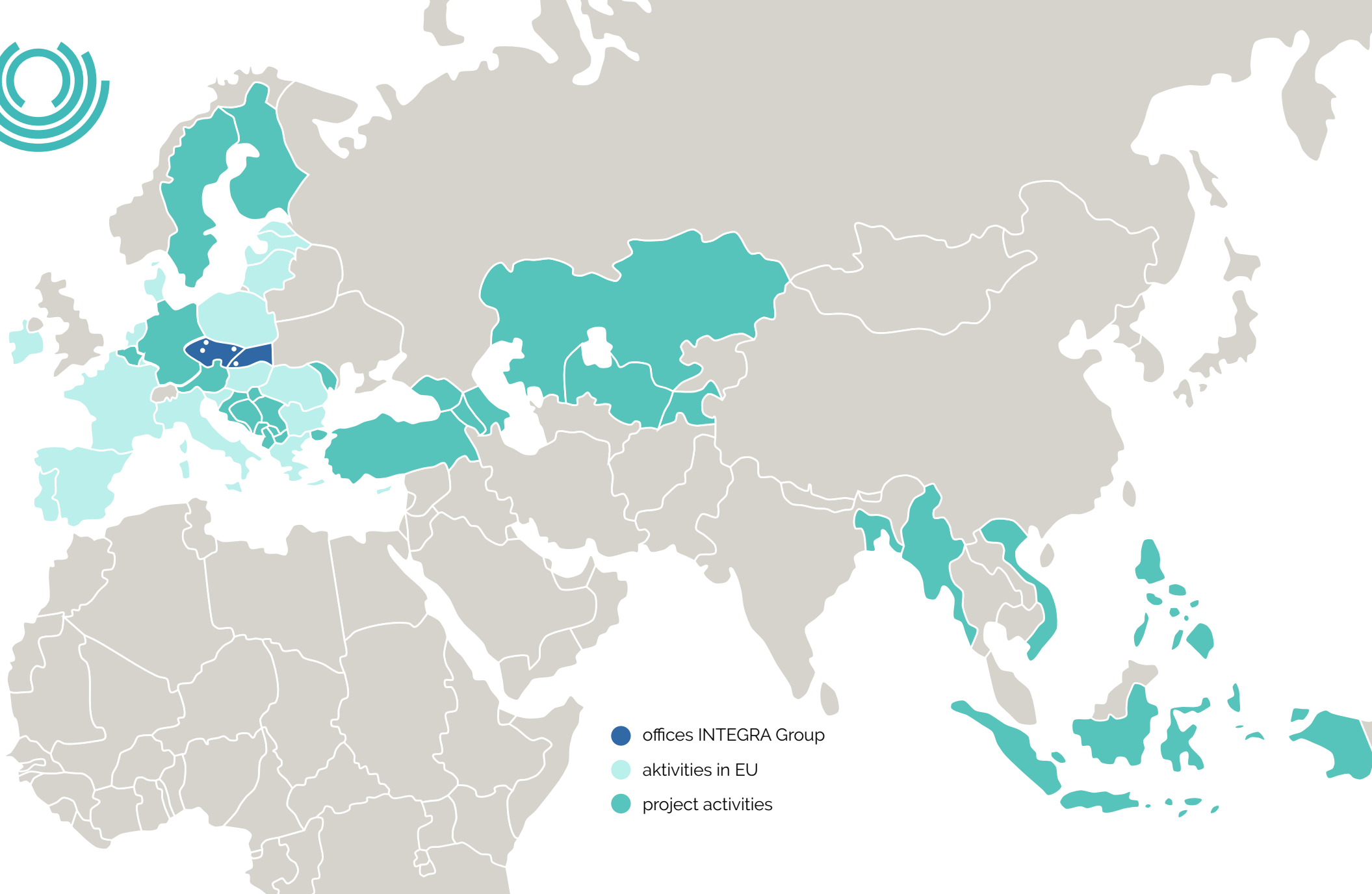


## **Petr Kazda**

*Director of the Partnership Foundation*

Integra Consulting has been developing the Adapterra Awards with us since the beginning as its expert sponsor. And it is a mutually fulfilling and rewarding collaboration. It appropriately combines their professional erudition and ability to facilitate expert discussions to clear conclusions with our ability to create stable long-term programs and to reach out to the general public with them. Over the 5 years of the competition, we have collectively visited and evaluated over 390 adaptation projects. Based on personal experience, an inspirational database of good practice is being created at [www.adapterraawards.cz](http://www.adapterraawards.cz).





- offices INTEGRA Group
- aktivities in EU
- project activities



# ACTIVITIES

On the following pages you will find a selection of activities from the past year in the main areas of our activities. It is not and cannot be an exhaustive description. Nor is it possible to avoid overlaps between areas. We hope you find our "Reader's Digest" an inspiring taster.



# ENVIRONMENTAL IMPACT ASSESSMENT



Environmental Impact Assessment (EIA) of specific projects, including strategic documents (SEA), is one of the key areas of our expert activity, both in the Czech Republic and abroad. We provide complete coordination of individual assessments, including preparation of partial analyses, communication with relevant public authorities, and facilitation of necessary consultations. Our team includes holders of authorization for the preparation of EIA documentation and assessment according to Act No. 100/2001 Coll., on Environmental Impact Assessment, as amended.

In 2023, we prepared notifications for plans to build wind power plants in Kobylá nad Vidnavkou or in the Hradčany - Kobeřice area. SEA 6 was a challenging but interesting order. Update of the Principles of Territorial Development of the Ústí nad Labem Region, the subject of which was in particular a lithium mining project in Cínovec in the Ore Mountains.





In addition to the preparation of standard assessments, in 2023 we implemented or participated in projects focused on capacity building for SEA and EIA, respectively on the preparation of analyses of compliance of the EIA system in the Czech Republic with the requirements of international financial institutions. Such analysis included, for example, the assessment of the readiness of the Prague - Kladno railway line modernisation project with connection to Ruzyně Airport in terms of environmental and social requirements of the European Bank for Reconstruction and Development (EBRD). In 2023, we also continued our participation in the project "Improving regional and sectoral development plans using SEA in the Aral Sea region", funded by the German Development Agency (GIZ). As part of this project, we implemented three pilot SEAs in Kazakhstan and Uzbekistan with an international team of experts, including the organization of SEA training. For the United Nations Development Programme (UNDP) we prepared an assessment of the quality of the EIA documentation for the Sateska River revitalisation project in Northern Macedonia. Our expert also participated in the facilitation of the Consultative Meeting of the National Representatives of the UNECE Espoo Convention (UNECE) and in the preparation of the Action Plan to promote the effective application of SEA and EIA in the Balkan States



# NATURE AND LANDSCAPE

Evaluation of the Effectiveness  
of the Protected Area  
Management System in Finland



Preparation of the  
Management Plan for Sevan  
National Park in Armenia



Although we deal with environmental assessment in general, a significant part of our activities is specific assessment of impacts on nature and landscape, and related proposals for practical measures to preserve or improve the status of habitats and species. Within the consortium, this area is primarily (but not exclusively) covered by DHP Conservation.

In the Czech Republic, we have carried out dozens of impact assessments on Natura 2000 sites and nature and landscape impact assessments in 2023. In all cases we work with experienced authorised persons. It is clear that the focus of the projects assessed is shifting significantly towards renewable energy sources and their location in the landscape.

In addition to authorized assessments, we provide exploratory biological field activities. We also act as biological supervision on selected construction sites. This gives us the opportunity to reduce the risk of harm to nature where development is necessary or appropriate.

Planning in nature conservation is not only not dealt with in the Czech Republic, but also in countries with insufficient professional capacities. That is why we were part of the team that, together with local experts, created a management plan for Lake Sevan National Park in Armenia.

An important activity was participation in the expert team that evaluated the effectiveness of their protected area system for Parks & Wildlife Finland. Thus, we had the opportunity to participate not only in the evaluation itself, but also in the development of a unique methodological approach, which will certainly be the basis for further development in this area at the global level in the future.



# ROAD ECOLOGY

Since the beginning of our work, we have been trying to find solutions to complex problems that affect the landscape and biodiversity. And because one of the key factors through which humans affect their environment is transport infrastructure, we focus on environmental activities around the road network. All INTEGRA Group companies are involved in this area, especially in the Czech Republic and Slovakia.

In 2023, we completed a detailed migration study for selected Class I roads in the Ústí nad Labem Region. We also provided monitoring of birds, amphibians and reptiles for a migration study on the upcoming R4 expressway in the section of the SK/PL state border - Kapušany. We prepared monitoring project for several upcoming constructions (e.g. D6 – Žalmanov-Kninice-Bošov).

The initiation management of the salt marsh near Mikulov under our expert biological supervision has also continued until the start of the motorway construction. At the same time, biological monitoring of the saltmarsh area was carried out throughout the year. Biological supervision was also provided on several other construction sites (e.g. motorway D6,D7 or road I/9).

We are also applying our experience in road ecology in the environmental impact assessment (EIA), e.g. in 2023 for the assessment of the I/7 Hora Sv. Šebestiána rest area or the Rohožník junction on the D2 motorway in Slovakia.

We are not only involved in transport in the field of road transport. In 2023, we also provided the biological basis for the assessment of the plan for the construction of high-speed lines (VRT Přerov and Moravská brána) and assessed the impacts of water transport on the Middle Elbe or in the port of Bratislava.







**Construction  
of a Dam on the  
Dyje River**



**Implementation  
of a Water Pond**



**Biological  
Supervision of the  
D6 Construction  
Project**



**Biological  
Supervision and  
Monitoring of the  
Effectiveness of  
Measures on the  
D6 Construction  
Project, Řevničov  
Bypass**





# CAPACITY DEVELOPMENT

Developing and connecting people where it is needed for the development of society is at the heart of our mission. What have we done in 2023 in this regard?

The Regional EIA Centre s.r.o. and Integra Consulting s.r.o. organised the 13th annual national SEA/EIA conference in Rožnov pod Radhoštěm in April 2023. The conference, which was attended by more than 130 participants, provided an opportunity for discussion on the effectiveness of the current SEA and EIA practice in the Czech Republic, on current and expected future trends in the field of impact assessment, or for the presentation of foreign experience. The papers and presentations were organized into six thematic sections:

- **The role of impact assessment in the energy sector**
- **SEA**
- **Climate change - assessing climate risks and greenhouse gas emissions**
- **Transport Impact Assessment**
- **EU taxonomy**
- **Assessment of impacts on nature**





Integra Consulting has long been an expert guarantor of the Adapterra Awards. It is a tool for us to discover new ways of adapting to climate change and to inspire others with good examples.

For the Ministry of the Environment, DHP Conservation facilitated roundtables to discuss and propose solutions to increase the effectiveness of nature conservation in practice.

Last but not least, DHP Conservation in partnership with Charles University successfully concluded the course Trends in Nature Conservation. It was attended by more than 120 directly certified participants, and its outputs in the form of recorded lectures and webinars were viewed by more than 10 thousand more interested people.

#### EIA/SEA Conference 2023





# RESEARCH AND INNOVATION

We regularly participate in applied research projects and also monitor developments in legislation and sustainability trends. One cannot be separated from the other. Both are also a bit of research and equally a search for new solutions to societal challenges.

In the project of the Applied Research of the Technology Agency of the Czech Republic, DHP Conservation developed and field-tested a methodology for detailed delineation of floodplains in a consortium together with the companies Ekotoxa and GISAT. The proposed methodology was subsequently certified by the Ministry of the Environment.

Aquagen participates in the TAČR project "Optimization of a set of measures for agricultural catchments within the process of land improvement", in which together with the Technical University of Liberec - Institute for Nanomaterials, Advanced Technologies and Innovations and the Research Institute of Land Reclamation and Soil Protection in Prague, it is verifying the possibilities of degradation of pesticides and their residues from reclamation water using biological materials in underground tanks and surface pools.

For the Union of Towns and Municipalities of the Czech Republic, we have prepared a methodology for the implementation of the principle of not significantly damaging the environment (DNSH) for applicants for EU funds in the Czech Republic. The methodology has been developed as a practical tool for municipal representatives, project managers and authority staff to grasp environmental requirements in the preparation of EU-funded projects and other requirements for sustainable development for responsible public procurement.





The web presentation of the Methodology allows better orientation in the texts of individual chapters and also offers a search for specific conditions for the implementation of the DNSH principles according to the type of activity, area and specific conditions in the section Guide.

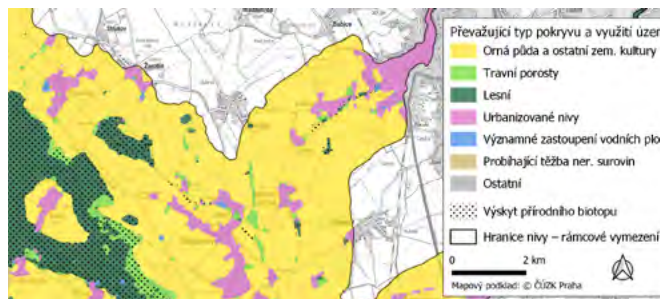
Within the framework of the Strategy for Designing Blue-Green Infrastructure within the framework of investment constructions of the Prague Technical Administration of Roads, we have prepared the Methodology of Searching for Sites for Planting and Restoration (Revitalization) of Trees, Principles of Planting New Trees and Establishment of Grass and Herbaceous Vegetation Usable in the Design of New Constructions, Design of Retention of Rainwater and Minimization of Drainage of such Water into Sewers and a Review of the Possibilities of Using Biomass Obtained from Vegetation Care. We have also used our experience in technical assistance for environmentally focused grant programs.

Within the topic Climate Proofing (part of the adaptation of projects to climate change), we are working on the verification of the climate impact of a specific project by analysing the climate risks associated with climate change. In the past, this has included photovoltaic power plant projects or plaza revitalization projects. The assessments have been used for Do Not Significant Harm (DNSH) reporting. Adaptation assessments have also been carried out for changes to land development plans for the SEA stage.

**Partnerství Fund – Adaptterra Awards** (photo: Vojta Herout)



**Framework Categorization of Floodplains – Research Project Outcome**





# CORPORATE SOCIAL RESPONSIBILITY AND SUSTAINABILITY



We actively contribute to the improvement of the environment through our own activities, thus demonstrating our strong social responsibility. In addition, we regularly support the Nature Conservation Forum, a platform for professional cooperation in nature conservation in the Czech Republic. DHP Conservation is also a member of the EUROPARC Federation, which brings together nature conservation organisations in Europe (not only) with links to protected areas.

INTEGRA Group thus contributes to sustainable development and the protection of natural resources, thereby fulfilling its mission and values.

# OUR TEAM: MEET US

None of what we have described on the previous pages would be possible without a quality team of outstanding experts. Meet us:, by nebylo možné dokázat nic z toho, co jsme popsali na předchozích stranách. Seznamte se s námi:



## **Michael Hošek**

*Managing Partner -  
Director Integra Consulting  
s.r.o., DHP Conservation s.r.o.*

He specialises in biodiversity conservation, although he must enjoy all INTEGRA Group activities, including operational ones. He also links professional activities with capacity building through trainings, meeting facilitation, and communication with the general public.



## **Jan Dušek**

*Managing Partner  
Integra Consulting  
s.r.o., DHP  
Conservation s.r.o.*

A zoologist by training, he is involved in a wide range of professional activities, including the preparation of methodologies and strategic documents or process analyses. He leads work teams and is responsible for communication with clients.



## **Martin Smutný**

*Managing Partner Integra Consulting s.r.o.*

Martin Smutný has more than 20 years of experience in environmental impact assessment. Since 2003, he has been involved as a team leader or team member in more than 50 SEA and EIAs for various types of plans, programmes and projects in the Czech Republic, Slovakia, and countries in Eastern Europe, Southeast Asia and the former Soviet Union. He has also been involved in the preparation of SEA and EA legislation and methodologies in many countries. Within the company he coordinates activities in the field of environmental impact assessment.



## **Vladimír Rimmel**

*Managing Partner  
RC EIA*

Graduated economist, all his professional life ecologist - consultant, since 1993 holder of EIA authorization and for the last 20 years sommelier and operator of the Chateau Wine Cellar in Klimkovice.



## **Martin Dušek**

*Senior Consultant,  
Managing Partner at  
Aquagen*

Trained as an ecologist, he is involved in management work at Aquagen and professional work in the following areas road ecology, aquatic ecosystems and habitats, compensatory measures and hydrobiology, conducts biological surveillance.



## **Radek Hromádka**

*Senior Consultant,  
Managing Director  
Aquagen*

Specializes in amphibian transfers and amphibian barriers. Another area of his of interest are projects and implementation of maintenance of roadside vegetation, in open countryside and intravilas in built-up areas.





### **Vlastimil Bogdan**

*Senior Consultant*

Educated ecologist who is dedicated to leading projects focused on mapping and monitoring nature. In the field of applied ecology, he has worked as a biological supervisor, coordinator of environmental monitoring or preparer of migration studies.



### **Přemysl Bureš**

*Senior Consultant*

Trained as a landscape engineer, primarily concerned with water retention in the landscape and development biodiversity in conjunction with water features and works. His practice addresses both the conceptual and practical aspects of projects, from client meetings and stakeholder consultation, to the implementation of works including Engineering.



### **Lenka Gillová**

*Senior Consultant*

Specialist in nature conservation with many years of experience in public administration. She focuses mainly on the assessment of impacts from the point of view of nature conservation.



### **Jitka Kaslová**

*Senior Consultant*

An environmental engineer by training, he is mainly involved in assessing the environmental impact of projects and concepts. Since 2003 he has been organizing the EIA/SEA professional conference.



### **Michal Kešner**

*Senior Consultant*

Leads work teams on specific projects and teams of field workers in the case of biological surveys. He also focuses on projects in GIS environments and mobile passporting technology. He is also involved in the assessment of the impact of projects on the environment and the preparation of methodologies.



### **Lucia Micková**

*Senior Consultant*

She is a graduated environmentalist, specializes in adaptation of projects to climate change, EU Taxonomy, and participates in the preparation of EIA documentation and various types of strategic documents.



**Michal Musil**  
*Senior Consultant*

He is a graduate of the Central European University in Budapest in Environmental Science and Policy and the Charles University in Prague in Geography and History. He has more than 15 years of practical experience in environmental impact assessment in the Czech Republic and abroad. He focuses mainly on Strategic Environmental Assessment (SEA) and Environmental and Social Impact Assessment (ESIA) of large projects.



**Rastislav Rybanič**  
*Senior Consultant*

He has put his education in conservation to full use in his career in both the NGO and government sectors. He is currently involved in natural resource conservation activities mainly in Slovakia.



**Kateřina Gombošová**  
*Junior consultant*

It deals with the maintenance of greenery from administrative activities to pre-implementation preparation, participates in on biological surveillance, performs engineering of environmental measures.



**Julie Lusková**  
*Junior consultant*

In the company, he is involved in projects and methodologies for nature conservation and sustainable use of natural resources. He focuses on coordinating environmental assessment and biodiversity conservation activities.



**Kateřina Zemanová**  
*Junior consultant*

She is an environmental engineer by training, focusing on environmental impact assessment (EIA), with a focus on the technical components of the environment.



**Timea Rizikyová**  
*Head of Office*

Ensures the efficient running of the office and coordinates the consortium's administration. Maintains records including personnel records, assists in the coordination of project activities and participates in the development of internal systems.







# LET'S GO!

